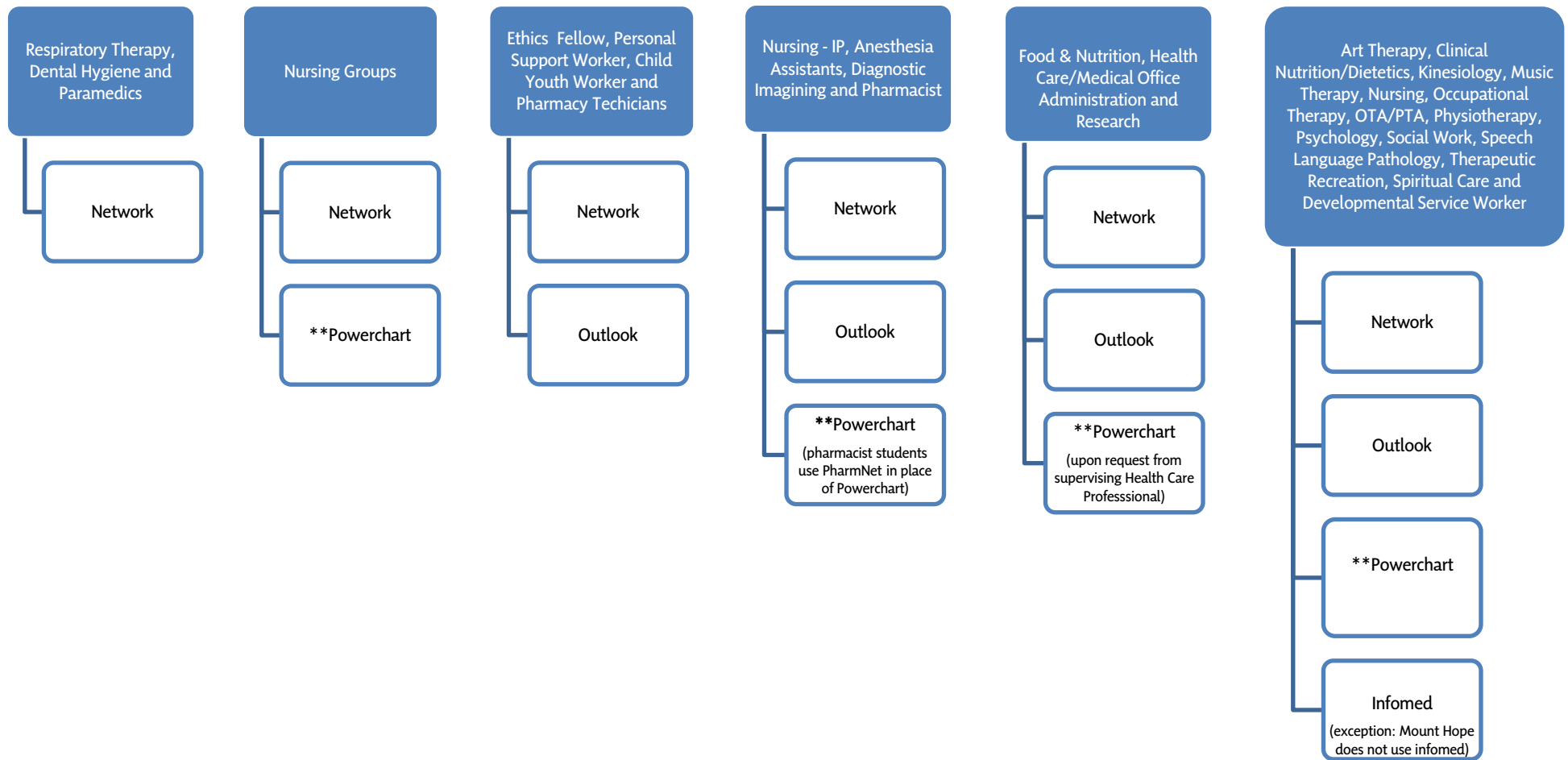


St. Joseph's Health Care London
Student Affairs
Student Computer Access

The following chart outlines computer access requirements by student group.



Note: G: drive access will be provided upon request of the supervising Health Care Professional's leader at least two weeks before start of placement. Your leader needs to send an email to the Helpdesk with your student's name and G:\folder\path information.

****Powerchart exceptions:** Please see the following chart for the areas that use an alternate electronic patient record (EPR) program.

St. Joseph's Health Care London
Student Affairs
Student Computer Access

Electronic Patient Record (EPR) Programs

The following areas use EPR programs other than Powerchart.

St. Joseph's Hospital

- Diabetes Education Centre → WebDR
- Urgent Care → FirstNet
- OR/SDCU/PACU/Cataract Suite → SurigNet

Mount Hope

- St. Mary's → PointClickCare
- Marian Villa → PointClickCare

Family Medical Centre

- Primary Diabetes Program → WebDR
- Family Medical Centre → Nightingale

Student Training Requirements

Electronic Computer Systems



Method of Training



Network and Outlook

- **All student groups** → One-on-one training with supervising Health Care Professional

Electronic Patient Records

- **Students with access to Powerchart** will be required to complete the on-line learning module in advance of their placement start date.
- **Students with access to any other electronic patient record program** will receive one-on-one training with their supervising Health Care Professional or will attend an in-class training session within the first week of placement.

Infomed

- **Students with access to Infomed** will be required to complete the on-line learning module in advance of their placement start date.