

Condensed Statement of Financial Position

<i>Year ended March 31</i>	2012		2011
	(000's)		(000's)
Assets			
Current assets	\$ 77,048	\$	70,983
Restricted investments	184,588		186,461
Capital assets and other	336,591		343,931
	598,227		601,375
Liabilities, Deferred Contributions and Net Assets			
Current liabilities	60,119		60,912
Long-term liabilities and deferred contributions	275,304		285,758
Net assets	262,804		254,705
	\$ 598,227	\$	601,375

Condensed Statement of Operations

Condensed Statement of Operations

Year Ended March 31

<i>Year ended March 31</i>	2012		2011
	(000's)		(000's)
Revenues			
Ministry of Health and Long-Term Care and LHIN	\$ 320,765	\$	364,487
Other	100,692		104,657
	421,457		469,144
Expenses			
Salaries and benefits	296,129		331,650
Other	114,339		126,888
	410,468		458,538
Excess of revenues over expenses from operations	10,989		10,606
Net restructuring expenses	(7,322)		(2,487)
Investment income	5,246		3,472
Unrealized investment (losses) gains	(814)		4,425
Excess of revenues over expenses	\$ 8,099	\$	16,016

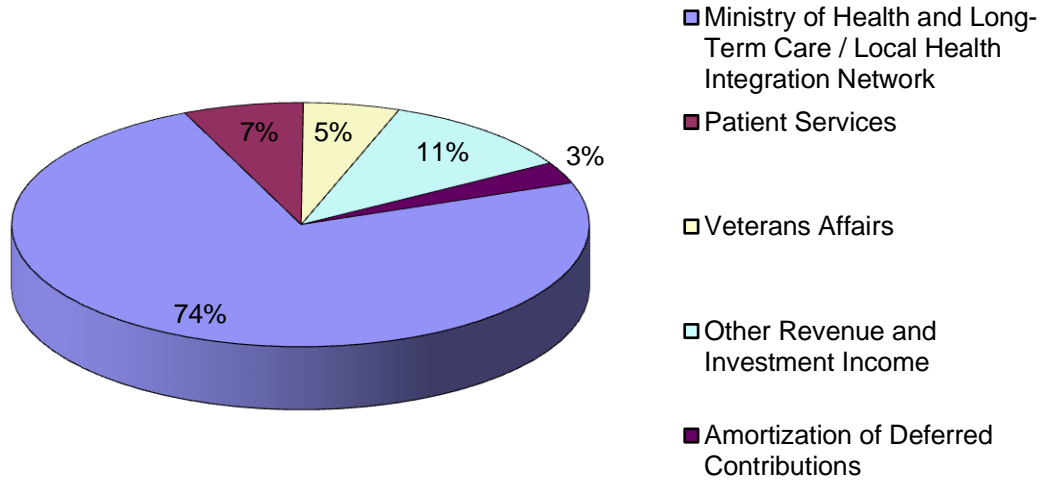
Condensed Statement of Cash Flows

<i>Year ended March 31</i>	2012		2011
	(000's)		(000's)
Cash provided by (used for):			
Operating activities	\$ 19,051	\$	6,178
Financing activities	8,733		49,142
Investing activities	(18,523)		(72,329)
Net (decrease) increase in cash and investments	9,261		(17,009)
Cash and investments, beginning of year	44,879		61,888
Cash and investments, end of year	\$ 54,140	\$	44,879

Where our money comes from to operate the organization.

The primary source of operational funding comes from MOHLTC, and Veterans Affairs Canada representing 79% of St Joseph's total funding resources

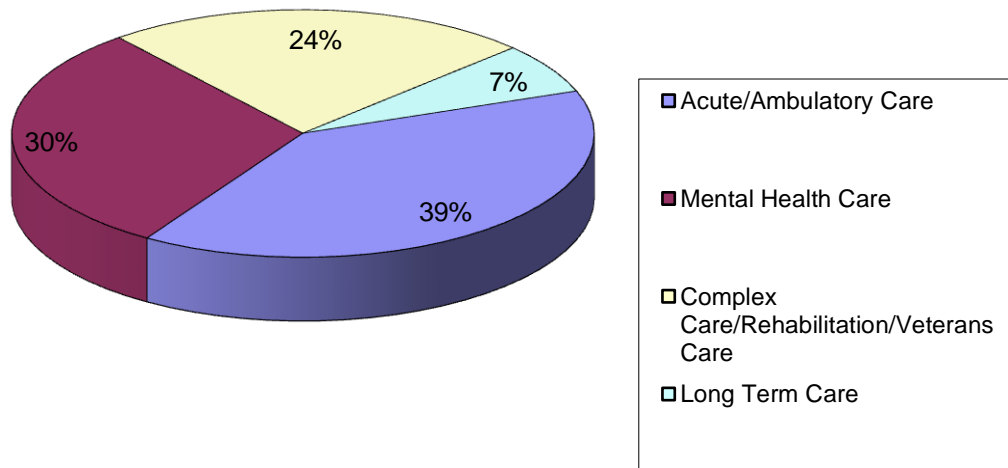
Total Revenues by Source



How our money is spent.

The following diagram represents the resource allocation break-down for St Joseph's major clinical care areas. Acute/Ambulatory Care represents approximately 39 per cent of the total expenditures, followed by Mental Health Care at 30 per cent and Complex Care / Rehabilitation / Veterans Care at 31 per cent.

Expenditure Allocation

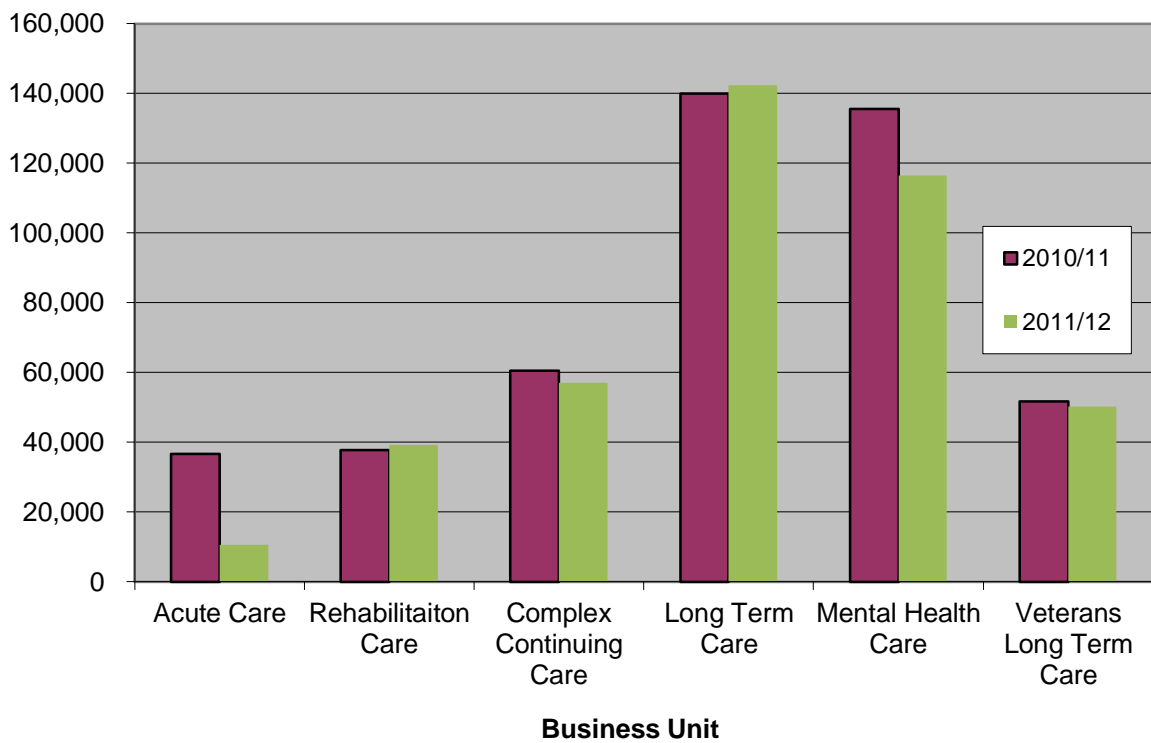


INPATIENT DAYS

Inpatient days

	2010/11	2011/12
Acute Care	36,612	10,491
Rehabilitaiton Care	37,647	39,211
Complex Continuing Care	60,534	57,072
Long Term Care	139,862	142,233
Mental Health Care	135,516	116,394
Veterans Long Term Care	51,718	50,129

Inpatient/Resident Days by Business Unit



OUTPATIENT VOLUMES

Outpatient Volumes

	2010/11	2011/12
Acute Same Day Surgery cases	20,584	20,516
Day/Night visits	36,167	31,306
Urgent Care visits	41,230	29,995
Acute Outpatient visits	300,563	280,842
Rehab, Complex Continuing Outpa	11,270	10,485
Mental Health Outpatient visits	176,241	140,158

Outpatient Volumes by Service Recipient Type

